

Jun Märkl
Music Director

C E L E B R A T E W O R L D - C L A S S

MUSIC

26 / 27 SEASON



INDIANAPOLIS
SYMPHONY
ORCHESTRA



Dear ISO friend,

The Indianapolis Symphony Orchestra belongs to this city and to the people who fill the hall, support the music, and share it with others. The 2026–27 season reflects that shared ownership, with performances that honor tradition while welcoming new audiences and fresh ideas. Led by the artistry of our musicians, this season invites connection and discovery. We're excited to welcome you back and to invite others to join you.

Here's what's coming next.



BEETHOVEN AT THE CORE

The 2026–27 season explores contrast and continuity, pairing Beethoven's concertos with major symphonic statements by Mahler, Brahms, Schumann, and Shostakovich. The ISO will perform all seven of Beethoven's concertos, including five piano concertos, the Violin Concerto, and the Triple Concerto, alongside two symphonies that trace his evolution from Classical clarity to Romantic expressiveness. Choose the *Your Season*,

Your Way subscription to customize a package that includes all of the Beethoven programs.

SYMPHONIC WORKS OF SCALE AND IMPACT

Mahler's Fifth Symphony, Respighi's *Pines of Rome*, and Tchaikovsky's *Pathétique* anchor a season defined by dramatic range, orchestral color, and emotional weight. Balancing the traditional with the new, music by Joan Tower, Camille Pépin, and Conrad Tao appears alongside the canon, reinforcing the ISO's commitment to living composers and contemporary perspectives. A special spotlight shines on Oregon-based composer Kenji Bunch throughout the season, including a significant new commission.

IMPACT OF THE BALLET RUSSES

The Ballet Russes revolutionized music by commissioning some of the greatest works from the 20th century. This season features many of those revolutionary works, including Stravinsky's *Rite of Spring*, *Petrushka*, *Pulcinella*, and *Apollo*, Mussorgsky's *Night on Bald Mountain*, and Poulenc's *Suite* from *Les Biches*. The new season also includes the sweeping sensuality of Ravel's complete *Daphnis et Chloé*.

STUNNING SOLOISTS

The season welcomes leading artists including Denis Kozhukhin, Ingrid Fliter, Vadim Gluzman, Arabella Steinbacher, and Conrad Tao, each bringing a distinctive voice to cornerstone repertoire. ISO principal musicians including Jiyeon Kim (cello), Jennifer Christen (oboe), and Ivy Ringel (bassoon) will perform Haydn's *Sinfonia concertante*, while guest pianist Alexandra Dariescu performs alongside ISO Concertmaster Kevin Lin and Principal Cellist Austin Huntington in Beethoven's majestic *Triple Concerto*.

Thanks to your support, the ISO continues to create life-changing moments and profound experiences that enrich our lives. I look forward to exploring the new season together at Hilbert Circle Theatre.




Jun Märkl, Music Director

26/27

TABLE OF CONTENTS

<i>Classical Series</i>	4
Printing Partners	
<i>Pops Series</i>	22
<i>Film Series</i>	30
Presented by Bank of America	
<i>Specials</i>	35
<i>Subscription Packages</i>	38
<i>Subscriber Benefits</i>	39
<i>Season Packages at a Glance</i>	40
<i>Seat Maps</i>	42



The easiest way to subscribe is online
IndianapolisSymphony.org/Subscribe



Classical SERIES



Spencer Meyer, Piano

***RITE OF SPRING* AND BEETHOVEN**

Jun Märkl and acclaimed Indiana University Jacobs School of Music faculty pianist Spencer Meyer unite for Beethoven's poetic Fourth Piano Concerto. Mussorgsky's wild *Night on Bald Mountain* and Stravinsky's revolutionary *Rite of Spring* complete this electrifying program, unleashing vivid orchestral color and drama.

MUSSORGSKY *Night on Bald Mountain*

BEETHOVEN Piano Concerto No. 4

STRAVINSKY *The Rite of Spring*



Jun Märkl, Conductor



SUBSCRIPTION PACKAGES:





BEETHOVEN AND MAHLER 1

2025 American Piano Awards winner Michael Davidman shines in Beethoven's elegant Second Piano Concerto, as Jun Märkl guides a journey from Beethoven's sparkling *Prometheus* Overture to the triumphant heights of Mahler's exhilarating First Symphony.

BEETHOVEN Overture to *Prometheus*

BEETHOVEN Piano Concerto No. 2

MAHLER Symphony No. 1



Jun Märkl, Conductor

Michael Davidman, Piano

OCT 15 11:00 AM	OCT 16 7:30 PM	OCT 17 5:30 PM
-------------------------------------	------------------------------------	------------------------------------

SUBSCRIPTION PACKAGES:



CONRAD TAO, BEETHOVEN, AND MOZART

Visionary pianist-composer Conrad Tao performs Beethoven's youthful First Piano Concerto and his own captivating new concert work *The Hand*, written as a modern companion piece to Beethoven's First Piano Concerto. Historical performance specialist Richard Egarr leads Mozart's grand Symphony No. 39, completing a vibrant musical experience.

TAO *The Hand*

BEETHOVEN Piano Concerto No. 1

MOZART Symphony No. 39



Richard Egarr, Conductor

Conrad Tao, Piano



OCT 23 7:30 PM	OCT 24 5:30 PM
------------------------------	------------------------------

SUBSCRIPTION PACKAGES:

C16 C8A 

SUBSCRIBE: 317-639-4300 · IndianapolisSymphony.org/Subscribe **7**

STRAVINSKY'S *PETRUSHKA*

French flair meets classical elegance as Jun Märkl leads Poulenc's witty ballet suite from *Les Biches* and Haydn's delightful Sinfonia concertante, featuring four ISO musicians as soloists. Continuing the season's look at music from the Ballet Russes, Maestro Märkl unleashes Stravinsky's dazzling, kaleidoscopic *Petrushka* to close the program.

POULENC *Les Biches* Suite
HAYDN Sinfonia concertante
STRAVINSKY *Petrushka*



Jun Märkl, Conductor



Associate Concertmaster, Violin



Jennifer Christen, Oboe



Jiyeon Kim, Cello



Ivy Ringel, Bassoon

JAN 8 7:30 PM	JAN 9 5:30 PM
-----------------------------------	-----------------------------------

SUBSCRIPTION PACKAGES:



ROMANTIC LEGACY: SCHUMANN AND BRAHMS

Acclaimed pianist Javier Perianes returns to perform Schumann's beloved Piano Concerto, music that sings with tenderness, poetry, and unbridled Romantic spirit. Jun Märkl pairs the concerto with the sunlit warmth of Brahms's radiant Second Symphony and introduces *Supermaximum* by this season's "Composer in the Spotlight," Kenji Bunch. Taut and high-energy, the work opens the program with driving momentum and a contemporary sense of intensity.

BUNCH *Supermaximum*
SCHUMANN Piano Concerto
BRAHMS Symphony No. 2



Jun Märkl, Conductor

Javier Perianes, Piano



JAN 21 11:00 AM	JAN 22 7:30 PM	JAN 23 5:30 PM
-----------------------	----------------------	----------------------

SUBSCRIPTION PACKAGES:



ECSTASY AND ELEGANCE: *DAPHNIS ET CHLOÉ*

Pianist Ingrid Fliter brings her poetic touch to Beethoven's dramatic Third Piano Concerto, while Jun Märkl leads Ravel's mesmerizing complete *Daphnis et Chloé* ballet score. *Time In* by "Composer in the Spotlight" Kenji Bunch begins the program, a luminous and rhythmically alive work that invites listeners into a heightened sense of presence and flow and establishes a reflective yet vibrant tone for the evening.

BUNCH *Time In*

BEETHOVEN Piano Concerto No. 3

RAVEL *Daphnis et Chloé*



INDIANAPOLIS
SYMPHONIC CHOIR



Jun Märkl, Conductor

Ingrid Fliter, Piano

**JAN
29**
7:30 PM

**JAN
30**
5:30 PM

SUBSCRIPTION PACKAGES:

C16 C8B

***PINES OF ROME* AND POULENC'S ORGAN CONCERTO**

Renowned organ virtuoso Paul Jacobs, on the Hilbert Circle Theatre's Mighty Wurlitzer, joins Jun Märkl for Poulenc's haunting Organ Concerto and Handel's charming *Cuckoo and the Nightingale*. Spotlight composer Kenji Bunch joins with a newly commissioned work. Respighi's majestic *Pines of Rome* brings the evening to a resplendent close.

HANDEL *The Cuckoo and the Nightingale*

POULENC Organ Concerto

BUNCH World Premiere Commission

RESPIGHI *Pines of Rome*



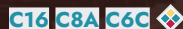
Jun Märkl, Conductor



Paul Jacobs, Organ

FEB 18	FEB 19	FEB 20
11:00 AM	7:30 PM	5:30 PM

SUBSCRIPTION PACKAGES:



SUBSCRIBE: 317-639-4300 · IndianapolisSymphony.org/Subscribe **11**

BERLIN TO VIENNA: MOZART AND MAHLER'S FIFTH

The Berlin Philharmonic's legendary horn virtuoso Stefan Dohr makes a special appearance in Mozart's charming Horn Concerto No. 3, while Jun Märkl and the ISO unleash the full power of Mahler's monumental Fifth Symphony—a cathartic journey from darkness to triumph.

MOZART Overture to *Così fan tutte*

MOZART Horn Concerto No. 3

MAHLER Symphony No. 5



Jun Märkl, Conductor

FEB
26
7:30 PM

FEB
27
5:30 PM

SUBSCRIPTION PACKAGES:



Stefan Dohr, Horn

CLASSICALLY MODERN: SHOSTAKOVICH, TCHAIKOVSKY, AND STRAVINSKY

Guest conductor Andrew Litton and cellist Paul Watkins infuse charm and vigor into Tchaikovsky's delightful *Variations on a Rococo Theme*. Stravinsky's graceful *Apollo* and Shostakovich's witty Symphony No. 9 complete this program brimming with grace, wit, and rhythmic brilliance.

STRAVINSKY *Apollo*

TCHAIKOVSKY *Variations on a Rococo Theme*

SHOSTAKOVICH Symphony No. 9



Andrew Litton, Conductor

Paul Watkins, Cello



SUBSCRIPTION PACKAGES:



RACHMANINOFF'S *SYMPHONIC DANCES* AND GLUZMAN PLAYS TCHAIKOVSKY

Giancarlo Guerrero leads a program propelled by rhythm spanning a century of symphonic expression, from Joan Tower's electric *Chamber Dance* to Tchaikovsky's Violin Concerto, featuring Vadim Gluzman, and Rachmaninoff's powerful, richly colored *Symphonic Dances*.

TOWER *Chamber Dance*
TCHAIKOVSKY Violin Concerto
RACHMANINOFF *Symphonic Dances*



Giancarlo Guerrero, Conductor



Vadim Gluzman, Violin

APR
16

7:30 PM

APR
17

5:30 PM

SUBSCRIPTION PACKAGES:



SWAN SONGS: TCHAIKOVSKY AND SIBELIUS

Acclaimed conductor Eun Sun Kim leads Sibelius's hauntingly beautiful Violin Concerto. Sibelius's mystical *Swan of Tuonela* opens this profound musical journey. Tchaikovsky's *Pathétique* closes the evening in a heartbreaking final gesture.

SIBELIUS *Swan of Tuonela*

SIBELIUS Violin Concerto

TCHAIKOVSKY Symphony No. 6



Eun Sun Kim, Conductor

Geneva Lewis, Violin



APR 22 11:00 AM	APR 23 7:30 PM
-------------------------------	------------------------------

SUBSCRIPTION PACKAGES:

C16 **C8A** **C6C** 



THE ITALIAN BAROQUE

Baroque meets modern as conductor-violinist Dmitry Sinkovsky leads an enchanting journey through Italian elegance and theatrical flair. Handel's sparkling *Agrippina* Overture launches the program, followed by the refined grandeur of Corelli and the festive brilliance of Vivaldi, before culminating in Stravinsky's witty and vibrant *Pulcinella* with vocal soloists from the Indiana University Jacobs School of Music.

HANDEL *Agrippina* Overture

CORELLI Concerto Grosso, Op. 6, No. 11

VIVALDI Concerto "Per la Solennità di S. Lorenzo"

STRAVINSKY *Pulcinella*

Dmitry Sinkovsky, Conductor & Violin

MAY

7

7:30 PM

MAY

8

5:30 PM

SUBSCRIPTION PACKAGES:



BRAHMS' VIOLIN CONCERTO AND *LA VALSE*

Brahms's soaring Violin Concerto sings through the strings of Italian virtuoso Francesca Dego under the baton of Joshua Weilerstein. Strauss II's elegant *Emperor Waltz* and Ravel's exhilarating *La Valse* highlight an evening glowing with Viennese charm and romantic nostalgia.

SCHREKER *Festwalzer und Walzerintermezzo*

BRAHMS Violin Concerto

STRAUSS II *Emperor Waltz*

KELLY *Elegy, In Memoriam Rupert Brooke*

RAVEL *La Valse*



Joshua Weilerstein, Conductor

MAY
14
7:30 PM

MAY
15
5:30 PM

SUBSCRIPTION PACKAGES:



Francesca Dego, Violin

SUBSCRIBE: 317-639-4300 · IndianapolisSymphony.org/Subscribe **17**



Alexandra Dariescu, Piano

***ROMEO AND JULIET* AND BEETHOVEN'S TRIPLE**

Jun Märkl begins with Kenji Bunch's Symphony No. 1, a bold contemporary statement shaped by propulsion and scale. He then spotlights three soloists in Beethoven's majestic Triple Concerto: guest pianist Alexandra Dariescu, alongside ISO Concertmaster Kevin Lin and Principal Cellist Austin Huntington. The drama climaxes with vivid excerpts from Prokofiev's *Romeo and Juliet*.

BUNCH Symphony No. 1 (*Lichtenstein Triptych*)

BEETHOVEN Triple Concerto

PROKOFIEV *Romeo and Juliet*



Jun Märkl, Conductor



Kevin Lin, Violin



Austin Huntington, Cello

**MAY
20**

11:00 AM

**MAY
21**

7:30 PM

**MAY
22**

5:30 PM

SUBSCRIPTION PACKAGES:

C16 C8B C6C 



Arabella Steinbacher, Violin

CELESTIAL BEETHOVEN: VIOLIN CONCERTO AND FOURTH SYMPHONY

Violinist Arabella Steinbacher lends her radiant tone to Beethoven's noble Violin Concerto, and Jun Märkl conducts Beethoven's vivacious Fourth Symphony. The evening opens with *Les Eaux célestes*, a shimmering recent creation by French composer Camille Pépin.

PÉPIN *Les Eaux célestes*

BEETHOVEN Violin Concerto

BEETHOVEN Symphony No. 4



Jun Märkl, Conductor

JUN 10 11:00 AM	JUN 11 7:30 PM	JUN 12 5:30 PM
-------------------------------	------------------------------	------------------------------

SUBSCRIPTION PACKAGES:

C16 C8A C6C 

SEASON FINALE: SCHUMANN'S FOURTH SYMPHONY

The season draws to a close with a powerful and reflective program led by Jun Märkl. The concert begins with *Dance for Martin's Dream* by Michael Abels, a moving tribute honoring the legacy and enduring vision of Dr. Martin Luther King Jr. The newly crowned 2026 IVCI Gold Medalist then joins the ISO for a dazzling violin concerto, before Schumann's impassioned Fourth Symphony brings the season to a stirring close.

ABELS *Dance for Martin's Dream*

TBD Violin Concerto

SCHUMANN Symphony No. 4



Jun Märkl, Conductor

Winner of the 2026 International Violin
Competition of Indianapolis, Violin

JUN 18 7:30 PM	JUN 19 5:30 PM
------------------------------	------------------------------

SUBSCRIPTION PACKAGES:

C16 C8B 



BUILD YOUR OWN
Beethoven
CUSTOM SUBSCRIPTION!

1770-1827
CELEBRATING 200 YEARS



With **Your Season, Your Way**, you can bundle our Beethoven programs into one package at a discounted rate.*

BEETHOVEN

SEP 25-26	PIANO CONCERTO NO. 4
OCT 15-17	OVERTURE TO PROMETHEUS AND PIANO CONCERTO NO. 2
OCT 23-24	PIANO CONCERTO NO. 1
JAN 29-30	PIANO CONCERTO NO. 3
MAY 20-22	TRIPLE CONCERTO
JUNE 10-12	VIOLIN CONCERTO AND SYMPHONY NO. 4

Ways to Subscribe:

IndianapolisSymphony.org/Subscribe
iso@indianapolissymphony.org
317-639-4300.



*Gala OPUS, Sept. 19, 2026, which features pianist Denis Kozhukin performing Beethoven's Piano Concerto No. 5, is a special event that is not included with subscription packages. GALA OPUS packages will be available for purchase in the spring.



P PRINTING
PARTNERS

Pops

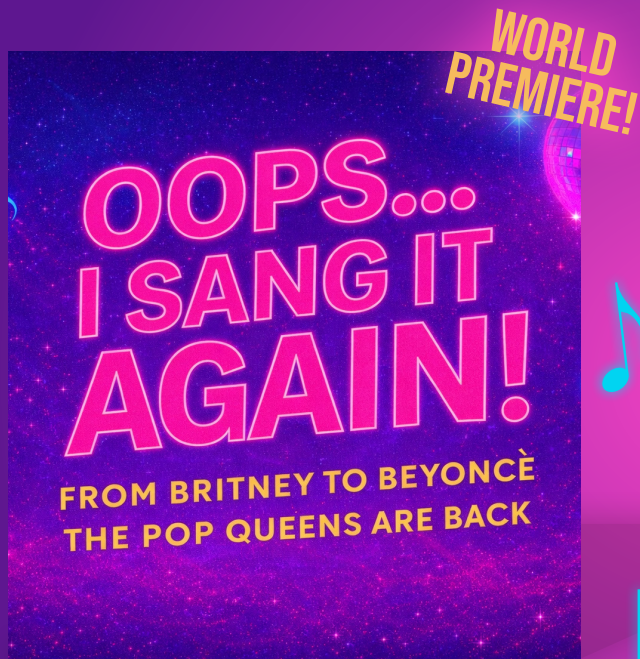
S E R I E S

Jack Everly,
Principal Pops Conductor

Enrico Lopez-Yañez,
Principal Guest Conductor of Pops

The easiest way to subscribe is online
IndianapolisSymphony.org/Subscribe





OOPS...I SANG IT AGAIN!

FROM BRITNEY TO BEYONCÉ,
THE POP QUEENS ARE BACK!

Hit me, baby, one more time with the smash hits of the millennial pop queens. Go Gaga for the epic riffs of Britney, Beyoncé, Christina, and more as three powerhouse vocalists join the orchestra to spice up your life. Join us for this world premiere with Principal Guest Conductor of Pops Enrico Lopez-Yañez!



Enrico Lopez-Yañez, Conductor

**OCT
9**

11:00 AM

**OCT
9**

7:30 PM

**OCT
10**

7:30 PM

SUBSCRIPTION PACKAGES:





Rick Steves, Narrator

Rick Steves'

EUROPE

A SYMPHONIC JOURNEY

Rick Steves, America's leading authority on European travel, teams up with the Indianapolis Symphony Orchestra for a spectacular musical journey through Europe. Playing musical tour guide, Steves utilizes his extensive knowledge of European history and culture to help set the context for each piece. Then, the orchestra performs a selection of stirring 19th-century anthems by Romantic-era composers, including Grieg, Smetana, Strauss, Berlioz, and Verdi. The music is accompanied by a montage of evocative video images from each country. Perfect for lovers of music, history, and travel.



Jack Everly, Conductor

NOV
13

11:00 AM

NOV
13

7:30 PM

NOV
14

7:30 PM

SUBSCRIPTION PACKAGES:



AN EVENING WITH CODY FRY

Grammy Award nominee and *American Idol* finalist Cody Fry brings his singer-songwriter talents and genre-blurring music to the ISO for a special concert with Principal Guest Conductor of Pops Enrico Lopez-Yañez. Fry's popular musical fusions and orchestrations have made him a viral sensation with millions of views online and increasing musical success, including an album release in 2023.



Enrico Lopez-Yañez, Conductor



Cody Fry, Vocalist



SUBSCRIPTION PACKAGES:





Tony DeSare, Vocalist

TONY DESARE'S "THE MUSIC OF BILLY JOEL"

Tony DeSare's signature vocal and piano style pay tribute to the iconic songs of Billy Joel. Generations of fans will experience full orchestrations of Billy Joel's beloved hits including *Only the Good Die Young*, *Just the Way You Are*, *Piano Man*, *You May Be Right*, *Movin Out*, *My Life*, and many more.



Jack Everly, Conductor

FEB
5

11:00 AM

FEB
5

7:30 PM

FEB
6

7:30 PM

SUBSCRIPTION PACKAGES:



CELTIC JOURNEY

Celtic Journey is a symphonic presentation of traditional Irish music, story, song, and dance. Taking a journey through time, the program features time-honored Irish marches, reels, jigs, and ballads with arrangements especially created to showcase the sound of the orchestra. A company of Irish musicians, dancers, and a storyteller join with the orchestra to offer audiences a lively and stirring performance of beloved music and dance from Celtic culture.



Enrico Lopez-Yañez, Conductor

MAR
12

11:00 AM

MAR
12

7:30 PM

MAR
13

7:30 PM

SUBSCRIPTION PACKAGES:



SUBSCRIBE: 317-639-4300 · IndianapolisSymphony.org/Subscribe **27**

MANDY GONZALEZ WITH THE ISO

The ISO welcomes back a truly iconic voice from the Broadway stage. From *Hamilton* and *In the Heights* to *Wicked* and *Sunset Boulevard*, Mandy Gonzalez brings her extraordinary talent and powerhouse vocals to light up the Hilbert Circle Theatre. Mandy's presence is more than a performance; it's an experience. A celebrated star of stage and screen, Mandy is known for her versatility, emotional depth, and her inspiring journey of resilience and strength.



Jack Everly, Conductor



Mandy Gonzalez, Vocalist

APR 9 11:00 AM	APR 9 7:30 PM	APR 10 7:30 PM
----------------------	---------------------	----------------------

SUBSCRIPTION PACKAGES:



BATTLE OF THE MAESTROS: THE SEQUEL

They're back by popular demand! Two of the nation's leading Pops conductors return to the stage together with the Indianapolis Symphony Orchestra! Maestro Jack Everly is joined by Enrico Lopez-Yañez (Principal Pops Conductor: Detroit Symphony, Pacific Symphony, and Principal Conductor of Dallas Symphony Presents) for a weekend of unforgettable Pops music showcasing their humor, unique stylings, and their friendship.

JUN 4 11:00 AM	JUN 4 7:30 PM	JUN 5 7:30 PM
----------------------	---------------------	---------------------

SUBSCRIPTION PACKAGES:



Jack Everly, Conductor

Enrico Lopez-Yañez, Conductor

SUBSCRIBE: 317-639-4300 · IndianapolisSymphony.org/Subscribe **29**

The easiest way to subscribe is online
IndianapolisSymphony.org/Subscribe



Film

S E R I E S

Presented by:

BANK OF AMERICA 

Harry Potter

AND THE
CHAMBER
OF SECRETS™

— IN CONCERT —

Audiences will be able to relive the magical adventure of Harry Potter's second year at school like never before. This concert features *Harry Potter and the Chamber of Secrets™* in high-definition while the Indianapolis Symphony Orchestra performs John Williams' otherworldly score. Experience the wonder of talking spiders, scolding letters, and giant snakes all over again!



Jack Everly, Conductor

OCT 30 7:00 PM	OCT 31 2:00 PM	NOV 1 2:00 PM
------------------------------------	------------------------------------	-----------------------------------

SUBSCRIPTION PACKAGES:



BROUGHT TO YOU BY
CINECONCERTS

All characters and elements © & ™ Warner Bros.
Entertainment Inc. Publishing Rights © JKR.

THE ^{Disney} LION KING

LIVE IN CONCERT

Bring the entire family to experience the epic Walt Disney Animation Studio's feature *The Lion King* with Hans Zimmer's Oscar®-winning score performed live by the Indianapolis Symphony Orchestra, conducted by Jack Everly. The original 1994 version features unforgettable music by a team including Elton John, lyricist Tim Rice, and Hans Zimmer — plus African vocal and choir arrangements by South African producer and composer Lebo M.



Jack Everly, Conductor

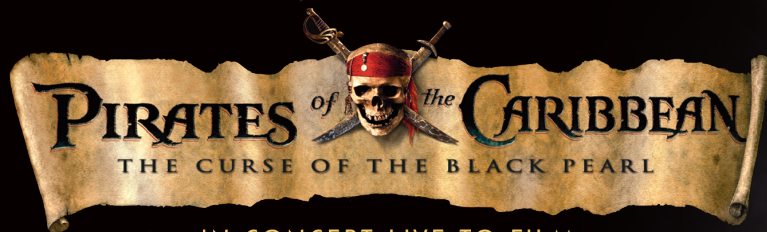
FEB <i>13</i> 2:00 PM	FEB <i>13</i> 7:00 PM	FEB <i>14</i> 2:00 PM
-----------------------------	-----------------------------	-----------------------------

SUBSCRIPTION PACKAGES:



©Disney

Presentation licensed
by Disney Concerts.
All rights reserved



IN CONCERT LIVE TO FILM

Come along for a swashbuckling adventure with Captain Jack Sparrow, his motley crew, and your Indianapolis Symphony Orchestra. Starring Johnny Depp, Orlando Bloom, and Keira Knightley, the action-packed movie sets mystery, intrigue, swords, and treasure to a live performance of Klaus Badelt's thrilling musical score based on themes of Hans Zimmer.



Jack Everly, Conductor

MAR 20 7:00 PM	MAR 21 2:00 PM
------------------------------------	------------------------------------

SUBSCRIPTION PACKAGES:



PRESENTATION LICENSED BY



©Disney

Presentation licensed
by Disney Concerts.
All rights reserved.



SUBSCRIBE: 317-639-4300 · IndianapolisSymphony.org/Subscribe **33**

STAR WARS™

RETURN OF THE JEDI

IN CONCERT

Experience the epic conclusion of the original trilogy as the Indianapolis Symphony Orchestra presents *Star Wars: Return of the Jedi* in Concert!

Principal Pops Conductor Jack Everly leads the orchestra in performing John Williams' legendary score live while the film plays on the big screen above the Hilbert Circle Theatre stage.



Jack Everly, Conductor

APR 30 7:00 PM	MAY 1 7:00 PM	MAY 2 2:00 PM
----------------------	---------------------	---------------------

SUBSCRIPTION PACKAGES:



© & ™ LUCASFILM LTD. ALL RIGHTS RESERVED.
PRESENTATION LICENSED BY DISNEY CONCERTS IN
ASSOCIATION WITH WARNER/CHAPPELL MUSIC.

GALA: OPUS ILLUMINATION THE EMPEROR AND THE SWAN

Endowed by Christel DeHaan

This year, Maestro Jun Märkl leads the ISO in Beethoven's Fifth Piano Concerto, the "Emperor," in a powerful musical centerpiece for Gala: OPUS 2026. World-renowned pianist Denis Kozhukin brings his admired interpretation of Beethoven to the ISO stage. Beethoven's "Emperor" Concerto embodies strength, confidence, radiance, and grace—music that rises above conflict to affirm the power and illumination of leadership through character, vision, and the enduring human spirit. The program also includes selections from Tchaikovsky's beloved *Swan Lake*. Guests will determine their experience for the performance, and will be invited to an immersive experience throughout Hilbert Circle Theatre, sharing the vibrancy of the ISO.

More Gala: OPUS details will be announced soon!



Jun Märkl, Conductor



Denis Kozhukin, Piano



SPECIAL EVENT



Get ready to celebrate the 40th anniversary of AES Indiana *Yuletide Celebration*! From dazzling costumes and choreography to your favorite holiday music performed by Broadway artists and the Indianapolis Symphony Orchestra, *Yuletide Celebration* delights audiences year after year. Start planning now to secure your seats for an unforgettable 40th anniversary program, complete with tap-dancing Santas, your favorite holiday music, and new magical moments. Tickets go on sale August 2026. Get presale access by becoming a subscriber, donor, or by bringing a group.



Jack Everly, Conductor



SPECIAL EVENT

aes Indiana **YULETIDE CELEBRATION**



HANDEL'S *Messiah*

The Palladium at the Center
for the Performing Arts

Presented by



HANDEL *Messiah*

Don't miss one of the most revered oratorios of all time as Handel's *Messiah* is performed by the Indianapolis Symphony Orchestra and the Indianapolis Symphonic Choir. This source of the familiar "Hallelujah Chorus" is one of music's most powerful messages of faith.

Indianapolis Symphonic Choir



SPECIAL EVENT



SYMPHONY ON THE PRAIRIE

**Tickets and summer concert
lineup coming March 31!**



SPECIAL EVENT

FIXED-SEAT SUBSCRIPTIONS

Choose from Classical or Pops and enjoy your choice of seats for each concert!

Classical Series

Group **C8A**, **C8B**, Coffee Classical (**C6C**),
or all 16 weeks (**C16**)

Printing Partners

Pops Series

All 7 weeks **P7**, or Coffee Pops **P6C**

Pops Series Title Sponsor



FLEX SUBSCRIPTIONS

Pick your concert and a different seat for each performance.

Film Series

Presented by Bank of America

Film Series

Presented by:

BANK OF AMERICA 

Pick any 3 Film Series Concerts: **F3**

▲ ADD A 4TH FILM SERIES CONCERT AT A DISCOUNT

Your Season, Your Way ♦

Mix and match four or more performances to create your custom season. Enjoy single ticket choices with subscriber benefits.

▲ CHOOSE THIS OPTION TO BUILD YOUR OWN PACKAGE FEATURING
ALL SIX BEETHOVEN PERFORMANCES THIS SEASON!

Symphony on Demand

You'll receive six vouchers that can be redeemed for any performance for any seat.



Special events do not apply to subscription packages.

SUBSCRIBER BENEFITS

	FIXED-SEAT	FLEX
Save up to 25% compared to single tickets	•	
Save up to 20% when purchasing tickets to additional performances	•	•
Exclusive presale access to Kroger <i>Symphony on the Prairie</i> or AES Indiana <i>Yuletide Celebration</i> tickets	•	•
Ability to exchange tickets and redeem vouchers before they go on sale to the public	•	•
Pick only your favorite programs at a discounted price		•
Enjoy the same seats for every concert in your subscription (renewable year after year)	•	
Access to additional subscription valet options*	•	

SUBSCRIBER PARKING OPTIONS

Express Park Garage at 20 North Pennsylvania Street

ISO ticket holders will receive a discounted rate of \$10 by presenting their ticket to the garage attendant. Please note that pre-paid parking passes are no longer available.

Valet Parking Subscription*

Hilbert Circle Theatre

Monument Circle Entrance

Enjoy the ease of not worrying about parking downtown. Arrive up to an hour before the performance, and we will take care of parking your vehicle for you.

Valet subscription costs \$30 per performance in your selected subscription. Exchanges are subject to availability.

*Available only for Evening *Classical* and Evening Printing Partners *Pops* subscribers.

SEASON PACKAGES AT A GLANCE

START TIMES

Classical Series

Friday 7:30 PM | Saturday 5:30 PM

Coffee Classical Series

Thursday 11 AM

Printing Partners Pops Series

Friday/Saturday 7:30 PM

Coffee Pops Series

Friday 11 AM

*All Coffee concerts are abbreviated,
unless otherwise noted.*

CLASSICAL PACKAGES

C16 Classical 16

C8A Classical Group 8A

C8B Classical Group 8B

C6C Coffee Classical

Classical Series

	DATES	C16	C8A	C8B	C6C	PAGE
<i>Rite of Spring</i> and Beethoven	Sep 25, 26	•	•			5
Beethoven and Mahler 1	Oct 15, 16, 17	•		•	•	6
Conrad Tao, Beethoven, and Mozart	Oct 23, 24	•	•			7
Stravinsky's <i>Petrushka</i>	Jan 8, 9	•		•		8
Romantic Legacy: Schumann and Brahms	Jan 21, 22, 23	•	•		•	9
Ecstasy and Elegance: <i>Daphnis et Chloé</i>	Jan 29, 30	•		•		10
<i>Pines of Rome</i> and Poulenc's Organ Concerto	Feb 18, 19, 20	•	•		•	11
Berlin to Vienna: Mozart and Mahler's Fifth	Feb 26, 27	•		•		12
Classically Modern: Shostakovich, Tchaikovsky & Stravinsky	Apr 2, 3	•	•			13
Rachmaninoff's <i>Symphonic Dances</i> and Gluzman Plays Tchaikovsky	Apr 16, 17	•		•		14
Swan Songs: Tchaikovsky and Sibelius	Apr 22, 23 (No Saturday concert)	•	•		•	15
The Italian Baroque	May 7, 8	•		•		16
Brahms' Violin Concerto and <i>La Valse</i>	May 14, 15	•	•			17
<i>Romeo and Juliet</i> and Beethoven's Triple	May 20, 21, 22	•		•	•	18
Celestial Beethoven: Violin Concerto and Fourth Symphony	Jun 10, 11, 12	•	•		•	19
Season Finale: Schumann's Fourth Symphony	Jun 18, 19	•		•		20

Pops and Film Series

	DATES	P7	P6C	F3	PAGE
Oops...I Sang It Again!	Oct 9, 10	•	•		23
Rick Steves' Europe: A Symphonic Journey	Nov 13, 14	•	•		24
An Evening with Cody Fry	Jan 15, 16	•			25
Tony DeSare's "The Music of Billy Joel"	Feb 5, 6	•	•		26
Celtic Journey	Mar 12, 13	•	•		27
Mandy Gonzalez with the ISO	Apr 9, 10	•	•		28
Battle of the Maestros: The Sequel	Jun 4, 5	•	•		29
<i>Harry Potter and the Chamber of Secrets™</i> In Concert	Oct 30, 31, 1			•	31
<i>The Lion King</i> Live in Concert	Feb 13, 14			•	32
<i>The Pirates of the Caribbean: The Curse of the Black Pearl</i> - In Concert Live to Film	Mar 20, 21			•	33
<i>Star Wars: Return of the Jedi</i> in Concert	Apr 30, May 1, 2			•	34

Specials

	DATES	PAGE
Gala OPUS: The Emperor and the Swan	Sep 19	35
AES Indiana <i>Yuletide Celebration</i>	Dec 4–23	36
Handel's <i>Messiah</i>	Dec 17	37
Kroger <i>Symphony on the Prairie</i>	Summer 2026	37

POPS/FILM PACKAGES

P7 Pops 7
P6C Coffee Pops
F3 Film 3

SEAT MAP

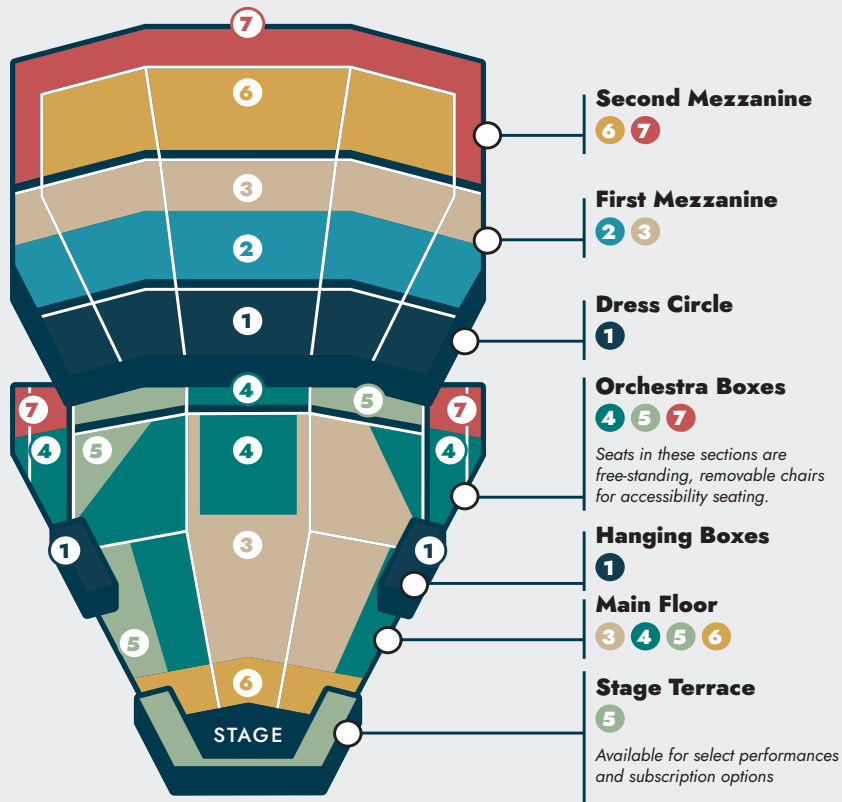
CLASSICAL / YOUR SEASON, YOUR WAY

CLASSICAL PACKAGES

- C16** Classical 16
- C8A** Classical Group 8A
- C8B** Classical Group 8B
- C6C** Coffee Classical

Classical Series

Price Tier	FRI/SAT C16	FRI/SAT C8A & C8B	COFFEE C6C
1	\$1,032.0	\$620.80	\$312.00
2	\$800.00	\$524.80	\$283.20
3	\$784.00	\$448.00	\$240.00
4	\$672.00	\$345.60	\$206.40
5	\$537.60	\$268.80	\$172.80
6	\$435.20	\$217.60	\$139.20
7	\$240.00	\$128.00	\$96.00



YOUR SEASON, YOUR WAY

Mix and match at least four performances to create your custom season. Enjoy single ticket choices with subscriber benefits.

Price Tier	COFFEE CLASSICAL	EVENING CLASSICAL	COFFEE POPS	EVENING POPS	FILM
1	NA	NA	NA	NA	NA
2	\$47.20	\$65.60	\$53.60	\$68.80	\$76.50
3	\$40.00	\$56.00	\$48.80	\$62.40	\$63.75
4	\$34.40	\$43.20	\$45.60	\$54.40	\$55.25
5	\$28.80	\$33.60	\$43.20	\$46.40	\$51.00
6	\$23.20	\$27.20	\$39.20	\$40.00	\$42.50
7	\$16.00	\$16.00	\$15.20	\$16.00	\$29.75



CHOOSE THIS OPTION TO BUILD YOUR OWN PACKAGE FEATURING
ALL SIX BEETHOVEN PERFORMANCES THIS SEASON!

GROUP RATES



BUYING FIVE OR MORE SUBSCRIPTIONS?
YOU MAY BE ELIGIBLE FOR A SPECIAL GROUP RATE.
GROUPS@INDIANAPOLISSYMPHONY.ORG

SEAT MAP

POPS / FILM

POPS/FILM PACKAGES

- P7** Pops 7
P6C Coffee Pops
F3 Film 3

PRINTING PARTNERS

Pops Series

Price Tier	FRI/SAT P7	COFFEE P6C
1	\$610.40	\$369.00
2	\$509.60	\$301.50
3	\$431.20	\$274.50
4	\$386.40	\$256.50
5	\$319.20	\$243.00
6	\$296.80	\$220.50
7	\$112.00	\$90.00

Pops Series Title Sponsor



Film Series

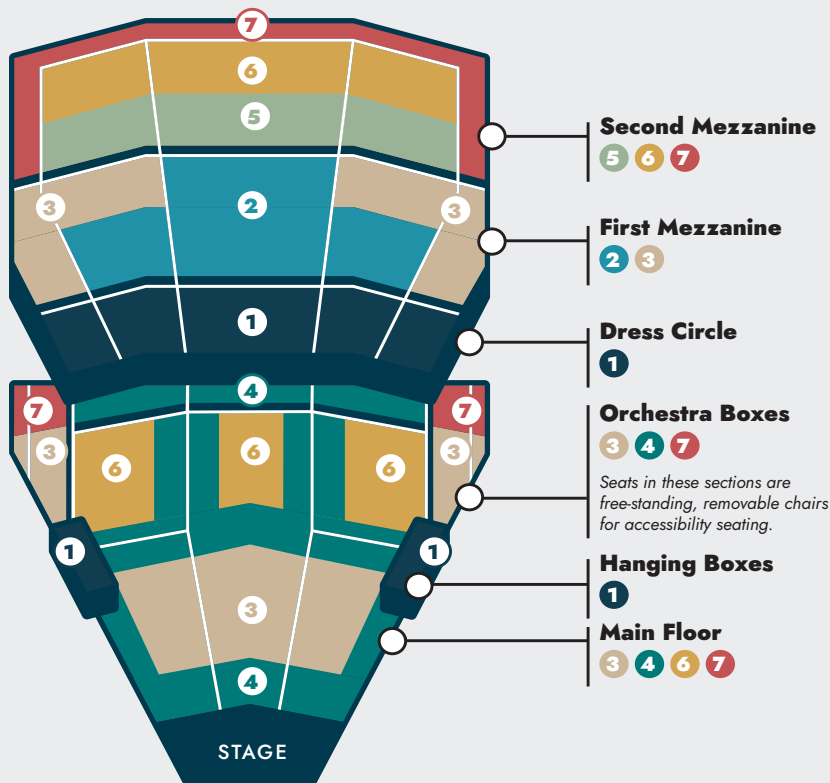
PRESENTED BY
BANK OF AMERICA

Price Tier	F3
1	\$285.60
2	\$234.60
3	\$198.90
4	\$173.40
5	\$165.75
6	\$132.60
7	\$96.90

Film Series

Presented by:

BANK OF AMERICA



OTHER WAYS TO SUBSCRIBE

The easiest way to subscribe is online
IndianapolisSymphony.org/Subscribe



iso@IndianapolisSymphony.org
 Send an email about your general inquiries to an ISO
 Customer Care Representative.

Hilbert Circle Theatre Box Office:
 Mailing Address
 32 East Washington Street, Suite 600
 Indianapolis, IN 46204

Residents of Indiana:
 317-639-4300
 Outside of Indiana: 800-366-8457

Group Sales: Call 317-639-4300 ext. 2378
 or groups@IndianapolisSymphony.org

Hilbert Circle Theatre Box Office
 Walk-Up Address
 45 Monument Circle,
 Indianapolis, IN 46204

Hours:
 M, W, Th, F: 10 a.m. - 5 p.m.
 Tu: 11 a.m. - 5 p.m.
 Sa, Su: Two hours before show



Make a gift!

The ISO plays a critical role in our vibrant city by enhancing the quality of life for area residents both artistically and economically.

WHY DONATE?

- 1** As a nonprofit organization, ticket sales only cover about 40% of the ISO's operating costs.
- 2** Thousands of students in Central Indiana have access to free music education each year through the ISO.
- 3** Indianapolis is one of only 26 American cities with a top-tier resident orchestra—an honor more exclusive than having a professional football team!
- 4** Donors receive special perks throughout the season, beginning at \$100.
- 5** Invitations to unique events throughout the year to meet with ISO musicians, guest artists and conductors, and more!
- 6** Giving is fun!

All donor opportunities are dependent upon your giving level. Visit indianapolissymphony.org/give for a complete list of exclusive benefits when you donate to the ISO.

HOW TO GIVE

Give Monthly

Join the Forever Sound Society and help sustain the ISO with monthly donations.

Give With Your Subscription

Include a gift to the ISO as part of your upcoming 2026–27 season subscription.

Give Online

Visit the ISO's website or scan the QR code.



IndianapolisSymphony.org

Contact Senior Director of Annual Giving Rose Branson at rbranson@indianapolissymphony.org or 317-742-9579 for more information.

The Indianapolis Symphony Orchestra is grateful for the generous support of these season-long corporate and foundation sponsors:

Title Sponsors



Premier Sponsors



Additional Support Provided By



Ways to ✨ Subscribe

IndianapolisSymphony.org

iso@IndianapolisSymphony.org

*Send an email about your general inquiries
to an ISO Customer Care Representative.*

Hilbert Circle Theatre Box Office

Mailing Address

32 East Washington Street, Suite 600
Indianapolis, IN 46204

Call us!

Indiana Residents: 317.639.4300

Outside of Indiana: 800.366.8457

Group Sales: Call 317.639.4300 or
groups@IndianapolisSymphony.org

Hilbert Circle Theatre Box Office

Walk-Up Address

45 Monument Circle,
Indianapolis, IN 46204

Hours:

M, W, Th, F: 10 a.m. – 5 p.m.

Tu: 11 a.m. – 5 p.m.

Sa, Su: Two hours before show